

Rhode Island - 2009

Figure A. Chlamydia rate per 100,000 women, 2000 - 2009

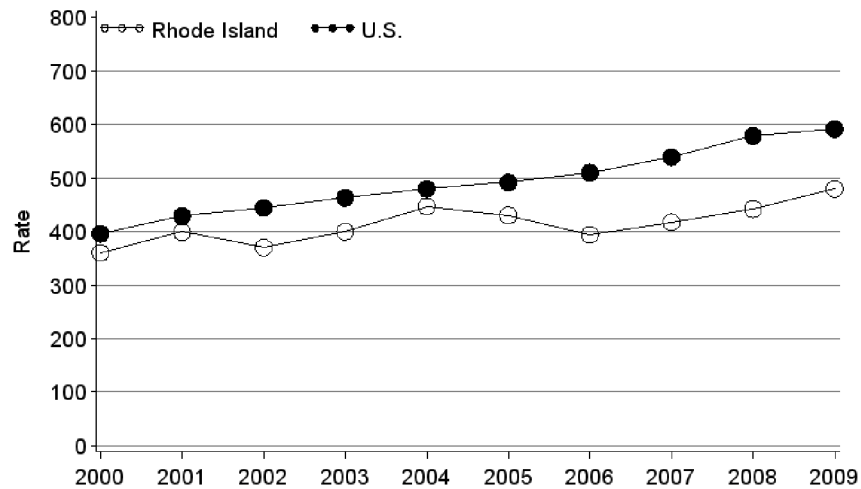


Figure B. Chlamydia positivity in women 15 to 24 years of age, by testing site, 2000 - 2009

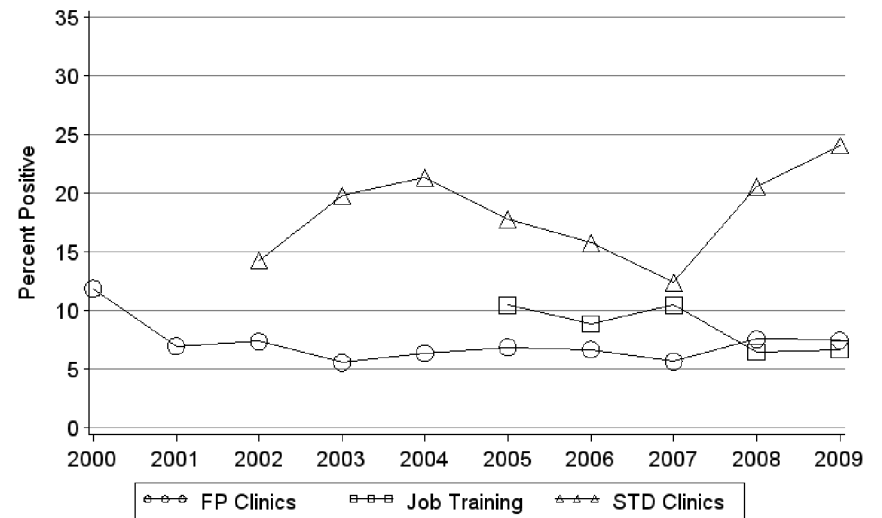


Table 1. Chlamydia positivity in women 15 to 24 years of age, by testing site, 2009

Testing Site	No. Clinics	No. Tested	Percent Positive
Family Planning	9	1,698	7.5
STD	1	112	24.1
Other	NA	NA	NA

Figure C. Chlamydia positivity by age group in women attending family planning clinics, 2009

