

Massachusetts - 2009

Figure A. Chlamydia rate per 100,000 women, 2000 - 2009

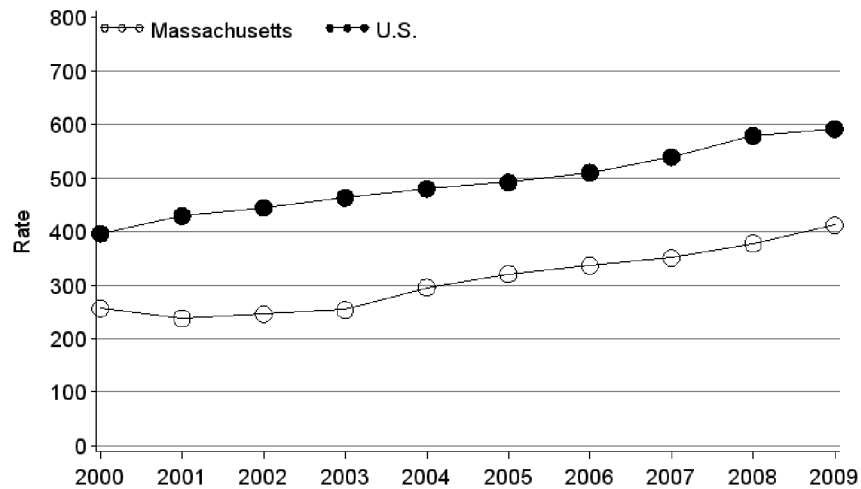


Figure B. Chlamydia positivity in women 15 to 24 years of age, by testing site, 2000 - 2009

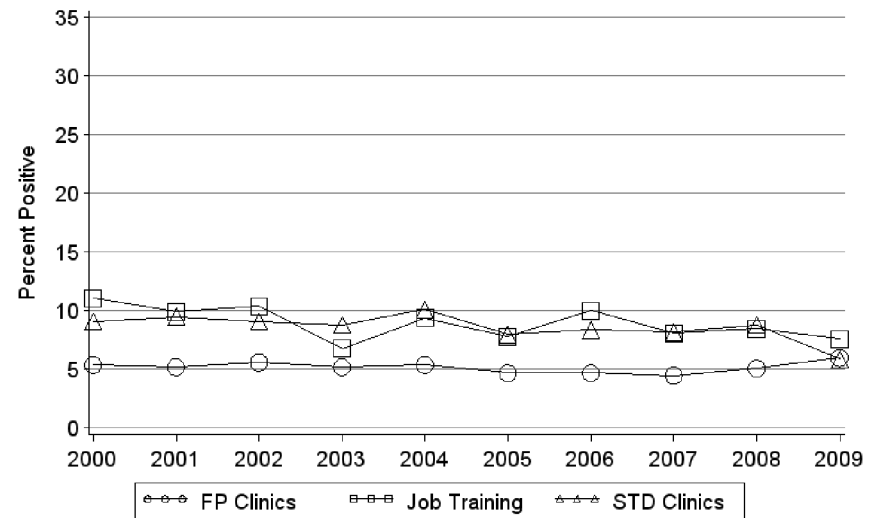


Table 1. Chlamydia positivity in women 15 to 24 years of age, by testing site, 2009

Testing Site	No. Clinics	No. Tested	Percent Positive
Family Planning	20	5,353	6.0
STD	2	435	6.2
Adult Corrections	1	163	7.4
Other	11	688	6.4

Figure C. Chlamydia positivity by age group in women attending family planning clinics, 2009

